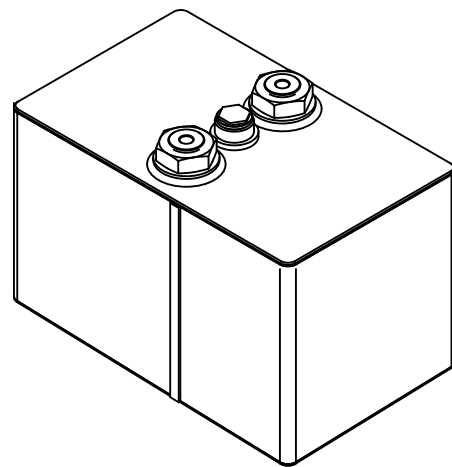
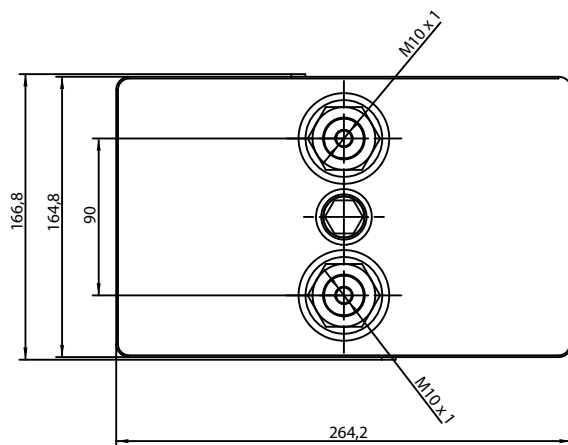
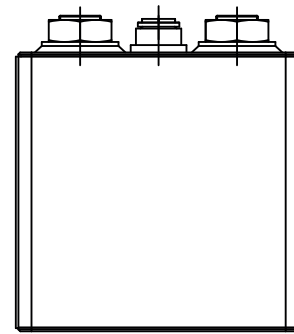
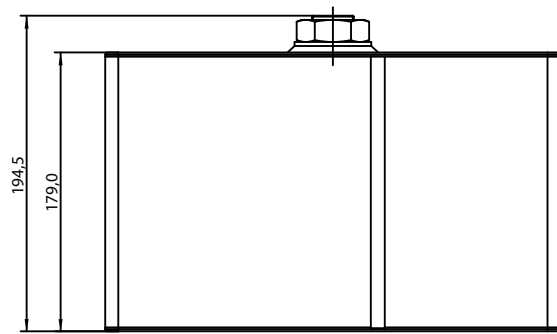


# TECHNICAL SHEET

1,3 kWh BATTERY/ V2-LINE



# Battery construction



## Recommended conditions for battery use

Maximum stored energy.....	1,3 kWh
Capacity.....	350 Ah
Nominal voltage.....	3,7 V
Maximum charging voltage.....	4,2 V
Minimum discharging voltage.....	2,0V
Recommended max. continuous charging current.....	<30 A
Recommended max. continuous discharging current.....	<80 A
Max. discharge current for 5 s.....	800 A
Max. discharge current for 50 s.....	500 A
Lifecycle @ 10% DOD*.....	>100000 cycles
Lifecycle @ 100% DOD*.....	>1000 cycles
Temperature range*.....	0°C to 80°C
Battery lifecycle**.....	>5000
Battery lifetime.....	~20 years
Weight.....	14,60 kg
Dimensions (W * D * H).....	264,2 x 166,8 x 171 mm
Combustibility / (UL 1973):.....	NO
Explosiveness.....	NO

\*) Charging 0°C and below – special charging regime – contact manufacturer)

\*\*\*) In compliance with the recommended operating parameters